







ADVENTIA  
GROUP



We are a health-focused business holding with the ambition to prevent pathologies and improve the quality of life of our patients.

Our purpose, mission, and strategic focus, guide us in the pursuit of Innovative solutions that have a positive impact on society.

-  **Quality:** search for the best raw materials.
-  **Own formulation:** Science-based formulas.
-  **Technology:** applied innovation.
-  **Specific solutions:** to everyday problems.

# ADVENTIA GROUP

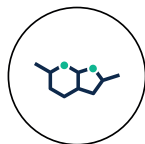
"Adventia Group includes the following business lines:



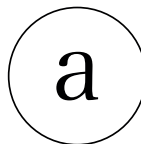
**Adventia  
Pharma**



**SmartHEN**



**Bariatric Line**



**Atika  
Pharma**



**Actúa**





Certified by the Swedish Rheumatism Association for comfortable handling and easy opening.



The only laboratory that uses Extra Virgin Olive Oil in all its diets.



Certified by the Spanish Association of Lactose Intolerant People as lactose-free products.



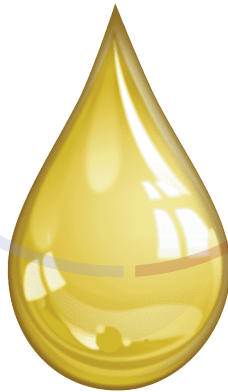
Packaging that is sustainable and maintains organoleptic characteristics.



Committed to the environment and plastic reduction.



Adventia Pharma is the only laboratory that uses  
**Extra Virgin Olive Oil (EVOO)**  
in all their oral Bi1 diets.



**Extra Virgin Olive Oil (EVOO)**  
has the health declaration approved by



European Food Safety Authority



Extra Virgin Oil (EVOO) it is a unique food, of exceptional properties nutritious and healthy.



The Tetra Brick is the **unique packaging** that protects the aroma, flavor and color of **EVOO** without altering it, maintaining all its properties **during 12 months**.



## Food for Special Medical Purposes

---



✓ Ready to drink

✓ No added sugars

✓ High amount of whey protein

✓ Enriched with specific nutrients

STANDARD ORAL NUTRITIONAL SUPPLEMENTS

Bi<sup>1</sup>active  
Bi<sup>1</sup>hp/hc  
Bi<sup>1</sup>hp<sub>fibra</sub>  
Bi<sup>1</sup>plus

SPECIFIC ORAL NUTRITIONAL SUPPLEMENTS

Bi<sup>1</sup>diacare<sub>hp/hc</sub>      Bi<sup>1</sup>peptidic  
Bi<sup>1</sup>diacare      Bi<sup>1</sup>pepticare  
Bi<sup>1</sup>procare      Bi<sup>1</sup>renacare<sub>dialyris</sub>  
Bi<sup>1</sup>alisenoc

STANDARD TUBE FEEDING

Bi<sup>1</sup>Viahp/hc<sub>fibra</sub>  
Bi<sup>1</sup>Viafibra

SPECIFIC TUBE FEEDING

Bi<sup>1</sup>Via<sub>hp/hc</sub>diacare  
Bi<sup>1</sup>Via<sub>hp/hc</sub>diacare  
Bi<sup>1</sup>Via<sub>hp/hc</sub>procare

MODULES AND COMPLEMENTS

Bi<sup>1</sup>esperante  
Bi<sup>1</sup>clear  
Bi<sup>1</sup>protein  
Bi<sup>1</sup>aminomix  
Bi<sup>1</sup>arginin  
Bi<sup>1</sup>glutamin



## Clinical situations that cannot meet nutritional needs with normal diet. Can they take food by mouth?

### DECISION TREE

YES

#### Increased energy requirements

<b>Bi<sup>1</sup> plus</b>	Vanilla	24 briks x 200 ml
	Strawberry	24 briks x 200 ml

#### Increased protein energy requirements

<b>Bi<sup>1</sup> active</b>	Strawberry	24 briks x 200 ml
	Vanilla	24 briks x 200 ml
	Brownie	24 briks x 200 ml

<b>Bi<sup>1</sup> hp/hc</b>	Strawberry	24 briks x 200 ml
	Vanilla	24 briks x 200 ml
	Peach	24 briks x 200 ml
	Brownie	24 briks x 200 ml

#### Increased protein requirements

<b>Bi<sup>1</sup> hp floxa</b>	Vanilla	24 briks x 200 ml
	Capuccino	24 briks x 200 ml

#### Specials needs

##### Diabetes

<b>Bi<sup>1</sup> diacare high</b>	Vanilla	24 briks x 200 ml
	Capuccino	24 briks x 200 ml
	Chocolate	24 briks x 200 ml

<b>Bi<sup>1</sup> diacare</b>	Vanilla	24 briks x 200 ml
-------------------------------	---------	-------------------

#### Specials needs

##### Poor absorption - Poor digestion

<b>Bi<sup>1</sup> papticid</b>	Vanilla	24 briks x 200 ml
--------------------------------	---------	-------------------

##### Metabolic stress

<b>Bi<sup>1</sup> procare</b>	Vanilla	24 briks x 200 ml
	Tangerine	24 briks x 200 ml
	Capuccino	24 briks x 200 ml

##### Oncology

<b>Bi<sup>1</sup> alisenoc</b>	Vanilla	24 briks x 200 ml
	Brownie	24 briks x 200 ml
	Tropical	24 briks x 200 ml

##### Kidney disease in dialysis

<b>Bi<sup>1</sup> renacare dialyris</b>	Vanilla	24 briks x 200 ml
---	---------	-------------------

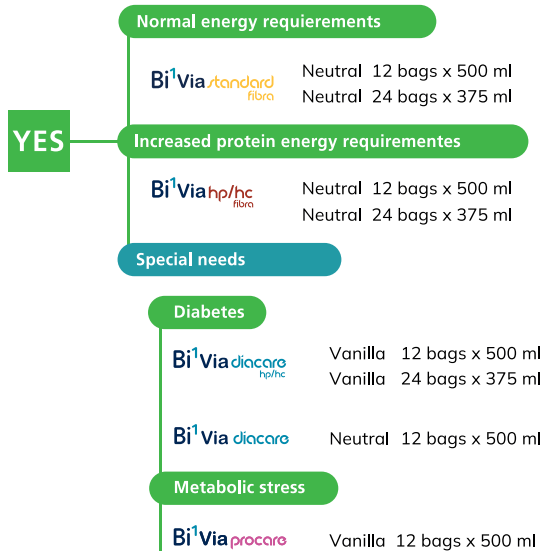
NO

Tube feeding nutrition



Clinical situations that cannot meet nutritional needs with normal diet and cannot eat food orally.

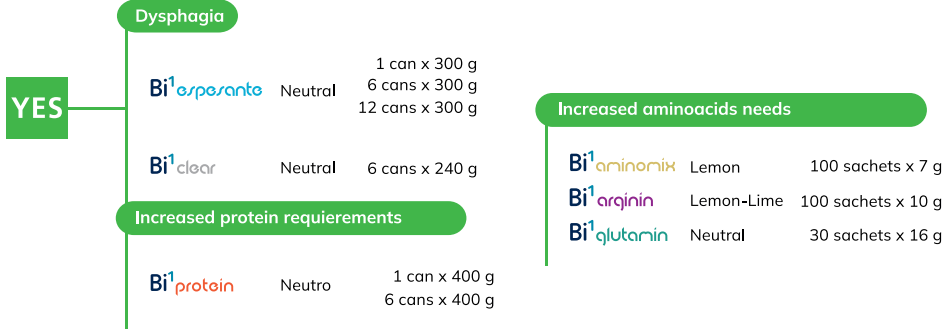
DECISION TREE





## Clinical conditions that require a food supplement or module.

## DECISION TREE





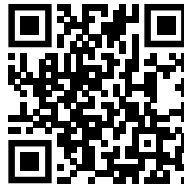
**UPCOMING LAUNCHES**

---





**Bi<sup>1</sup>** deqlucare





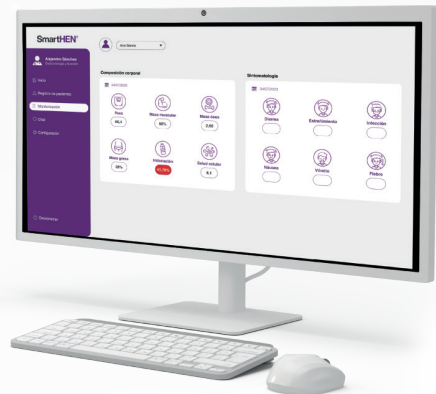
# SmartHEN<sup>®</sup>

The SmartHEN ecosystem heralds a new paradigm in clinical nutrition, introducing a service to the industry focused on the patient monitoring across all aspects in a simple manner and providing unique solutions for patients, physicians, and pharmaceutical laboratories.

SmartHEN has developed disruptive devices with patented technology.



[www.smarthen.com](http://www.smarthen.com)





- Device for collecting body composition data, monitoring nutritional status and other health parameters.
- Connected to **SmartHEN** App and the Medical Platform.
- Usability, reliability and high precision.



biamoove

### Body composition

Fat mass - Hydration  
Lean mass - Phase angle (cellular health)  
Muscle mass - Metabolic rate  
Bone mass

### Symptoms

Diarrhea - Nausea  
Constipation - Fever  
Vomiting - Infection (PEG)

### Cardiovascular

ECG

### Wound healing

Skin analysis  
Photography

### Incidents with the equipment

Pump - Tube  
Mobile App

## Daily monitoring of health parameters



SH®



- Best enteral nutrition pump for home use.
- Suitable for any package and brand.

moove



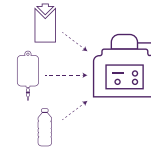
### Benefits for patients

- **Simpler daily tasks:** For patient and caregivers during feeding.
- **Tabletop device:** No need for a pole.
- **Ergonomic:** Small, light, and easy to use. Hardly needs previous training.
- **Safe:** Low contamination risk.



### Benefits for doctors and laboratories

- **Reduced need for assistance:** Fewer issues with the equipment.
- **Home care:** Simplifies transition from hospital to home environment.
- **Efficient costs:** Making the whole vademecum suitable for tube feeding.



### Universal system:

Moove feeding set can be customized to fit with any clinical nutrition brand and any type of container (bottles, bags, or carton packaging)

Moove infusion Pump is worldwide patented







# Bariatric*line*

Welcome to your new life



**Bariatricline** is a laboratory specializing in products for patients living with obesity and bariatric surgery



All our products have been developed by our technical team in collaboration with experts in the specific nutritional support of bariatric patients, following the clinical guidelines of the main scientific societies of bariatric surgery.

## MULTIVITAMINS AND MULTIMINERALS



The Barimix® catalogue is composed of **vitamin and mineral supplements** specific for bariatric patients.

\* Classified as Foods for Special Medical Purposes and/or Food Supplements

# BariMIX

## Formulated following the most recent recommendations of:

- The American Society of Metabolic and Bariatric Surgery (ASMBS 2016)
- The Canadian Adult Obesity Clinical Practice Guidelines (CPGS 2020)
- Spanish Society of Nutrition and Endocrinology (SEEN 2020)

**The BariMIX®** catalogue has been reinforced with vitamins and minerals necessary before and after bariatric surgery.

## Special attention is provided in the supplementation of:

- **B complex** vitamins
- **Fat soluble vitamins** (A, D, E & K)
- **Iron, Zinc, Selenium and Chromium**



## MULTIVITAMINS AND MULTIMINERALS



**BariMIX**  
**PRE**

- Food supplement
- **Pre-bariatric surgery**
- Bottle x 30 capsules
- 1 capsule/day



**BariMIX**  
**POST**

- Food for Special Medical Purposes
- **Immediate post-operative**
- 15 peach liquid sticks
- 1 stick/day



**BariMIX**  
**GUMMIES**

- Food for Special Medical Purposes
- **All types of bariatric surgery**
- Bottle x 90 raspberry gummies
- 3 gummies/day (adjustable according to surgery)



**BariMIX**  
**PREGNANCY**

- Food for Special Medical Purposes
- **Pregnant women** undergoing bariatric surgery
- Bottle x 30 capsules
- 1 capsule/day



**BariMIX**  
BYPASS

- Food for Special Medical Purposes
- **Mixed** bariatric surgery
- Bottle x 30 capsules
- 1 capsule/day



**BariMIX**  
SLEEVE

- Food for Special Medical Purposes
- **Restrictive** bariatric surgery
- Bottle x 30 capsules
- 1 capsule/day



**BariMIX**  
BPD

- Food for Special Medical Purposes
- **Malabsorptive** bariatric surgery
- Bottle x 30 capsules
- 1 capsule/day



**BariMIX**  
BAGUA

- Food for Special Medical Purposes
- **Mixed** bariatric surgery
- Bottle x 30 capsules
- 1 capsule/day



**BariMIX**  
GLP

- Food supplement
- To cover the vitamin and mineral needs of patients living with obesity during **weight loss by restrictive diet or medication**
- Bottle x 30 capsules
- 1 capsule/day



**BariMIX**

- Food supplement
- **All types** of bariatric surgery
- Bottle x 30 capsules
- 1 capsule/day



## MINERALS



Bari**CALCIUM**

- Food supplement based on **calcium citrate and vitamin D**
- Bottle x 60 chewable tablets
- 2 chewable tablets/day



Bari**ZINC**

- Food supplement based on **zinc gluconate**
- Bottle x 30 capsules
- 1 capsule/day



Bari**CUPRUM**

- Food supplement based on **copper sulphate**
- Bottle x 30 capsules
- 1 capsule/day

## COMPLETE DIET

Bi<sup>1</sup> bificare

Food for Special Medical Purposes



**Oral Nutritional Supplement** specifically formulated to meet the nutritional needs of patients who have undergone or are about to undergo bariatric surgery.

**INDICATIONS:**

- Before surgery
- After surgery

**NORMOCALORIC:** 1 kcal/ml (200 kcal/brik)  
**HIGH PROTEIN:** 35% (18 g/brik)

- 100% milk protein (66% whey)
- Enriched in **leucine** (3 g/envase)
- Low percentage of fat (19%)
- 65% **Extra Virgin Olive Oil**
- **EPA & DHA** (340 mg/brik)
- Low glycemic carbohydrates (dextrine and maltodextrine)
- Sugar free
- Mix of fibre (70/30)
- **With postbiotics:** BPL-1 (3,3 billones CFU/brik)
- Lactose and gluten free





## SARCOPENIA

### SARCOPENIC OBESITY

OBESITY

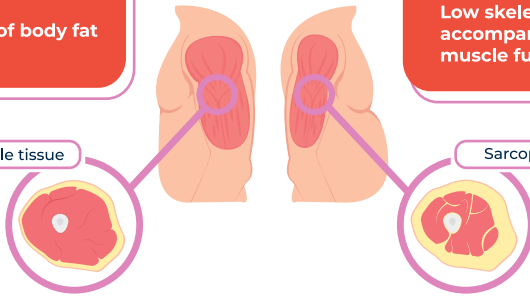


SARCOPENIA

High percentage of body fat

Low skeletal muscle mass accompanied by decreased muscle function

Normal muscle tissue



Sarcopenia



- Food for Special Medical Purposes based on **Whey concentrate**
- Bottle x 500 g
- 1-2 scoops per day



- Food supplement based on **HMB-Ca, Creatine, Vitamin D and Magnesium**
- Bottle x 360g
- 1-2 scoops per day



## IMPROVING QUALITY OF LIFE



**BariFLAT**

### INTESTINAL DISCOMFORT

- Food supplement
- With Plants extracts and Probiotics
- Bottle x 30 capsules
- 1 capsule/day



**BariREFLUX**

### GASTRO-OESOPHAGEAL REFLUX

- Food supplement
- Based on carnosine and *Opuntia Ficus-indica*
- 18 sticks
- 1 stick after main meals



**BariFIBER**

### INTESTINAL TRANSIT REGULATION

- Food for Special Medical Purposes
- Soluble and insoluble fiber (67/33)
- Bottle x 210g
- 2-4 scoops/day



## IMPROVING QUALITY OF LIFE



**BariCAPIL**

### HAIR LOSS

- Food Supplement based on Aloe Vera, aminoacids, vitamins and minerals
- To be taken together with the specific BariMIX
- 30 Sticks
- 2 sticks/day



**BariSKIN**  
ANTIESTRIAS

### STRETCH MARKS AND FIRMNESS

- Body Cream
- Improves skin elasticity and firmness
- Bottle x 500ml
- Apply twice a day to the affected area



UPCOMING LAUNCHES:

Bari**MEAL**



[www.bariatricline.com](http://www.bariatricline.com)





# atika

PHARMA

The main goal of the laboratory is to provide **high-quality therapeutic solutions supported by rigorous clinical studies** and the expertise of our team of scientists and healthcare professionals.

We collaborate closely with **doctors and healthcare professionals** to ensure that our products are prescribed appropriately and safely.

---

a

# Digestive



## Esophacare




- Food supplement (Medical device registering)
- For the care of the esophageal and oropharyngeal mucosa.
- Based on Aloe Vera, Hyaluronic acid and chondroitin sulphate and vitamin C.
- Developed by ICTP-CSIC (Institute of Polymer Science and Technology of the CSIC)
- 20 drinkable 10 ml sticks
- **Indications:**
  - Esophagitis due to radiotherapy
  - Gastro-esophageal reflux disease GERD
  - Other esophageal and oropharyngeal mucosa alterations
- Clinical and preclinical studies with the final product

Bibliography: *Gastroenterol Hepatol.* 2023 Jun-Jul;46(6):455-461. doi: 10.1016/j.gastrohep.2022.10.013

## PiroCalm



- Food supplement
- Neutralizes the effects of acid in the esophagus.
- **Patented pH buffer system:** 
  - Based on MH-Innovabuffer™, Sodium alginate and *Opuntia ficus-Indica*.
- Selectively neutralizes acid and pepsin in the esophagus<sup>1</sup>
- It does not alter the pH or physiological activity of pepsin in the stomach<sup>1</sup>
- Fast and lasting action<sup>2</sup>
- 18 drinkable 10 ml sticks
- **Indications:**
  - Gastro-esophageal reflux disease GERD
  - Sporadic acidity
  - Alkaline reflux
  - **Suitable during pregnancy and lactation**
- Clinical and preclinical studies with the final product
- **Bibliography.**
  1. Ex vivo & in vitro studies. Internal data;
  2. Clinic study in patients with GERD. Internal Data.

## PERMEACARE

### Inicio



- ◉ Food supplement
- ◉ Based on L-glutamine, plant extracts, vitamins and zinc.
- ◉ A unique formula for the sequential and orderly treatment of increased intestinal permeability.

PHASE 1	PHASE 2	PHASE 3
Repairs the epithelium and reduces inflammation	Repairs and balances the microbiota	Restructures the epithelium

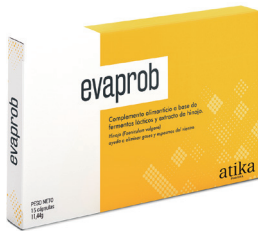
## PERMEACARE

### Mantenimiento



- ◉ Food supplement
- ◉ Based on Lactoferrin and mixture of live ferments
- ◉ For the maintenance of the physical structures of the intestinal barrier and promoting beneficial microbiota
- ◉ Indications:
  - Health problems related to increased intestinal permeability (e.g. digestive, rheumatological, dermatological, nervous system diseases, etc.)
  - Symptoms associated with damage to the intestinal mucosa.

# evaprob



- Food supplement
- Based on lactic ferments (7 probiotics) and fennel extract.
- Fennel helps reduce intestinal gas and decreases abdominal spasms.
- 15 capsules.
- Indications:
  - For the relief of gastrointestinal symptoms such as bloating, flatulence, or abdominal pain. For the improvement and balance of the intestinal microbiota after the use of antibiotics or laxatives.

# heliprotect



- Food supplement.
- Based on probiotics (*Saccharomyces boulardii*), Pylopass® (inactive *Lactobacillus reuteri*) and broccoli extract.
- 30 capsules.
- Helps reduce the bacterial load and improve gastrointestinal symptoms in patients infected with *Helicobacter pylori*.
- Exclusive formula with ingredients with its own clinical studies



# Self-care

Atika Pharma

## Calma care



- ◉ Food supplement
- ◉ Based on Bio-optimized turmeric, vitamin C and eggshell membrane.
- ◉ 60 capsules
- ◉ Indications:
  - Joint pain
  - Joint stiffness
- ◉ Exclusive formula with ingredients with its own clinical studies

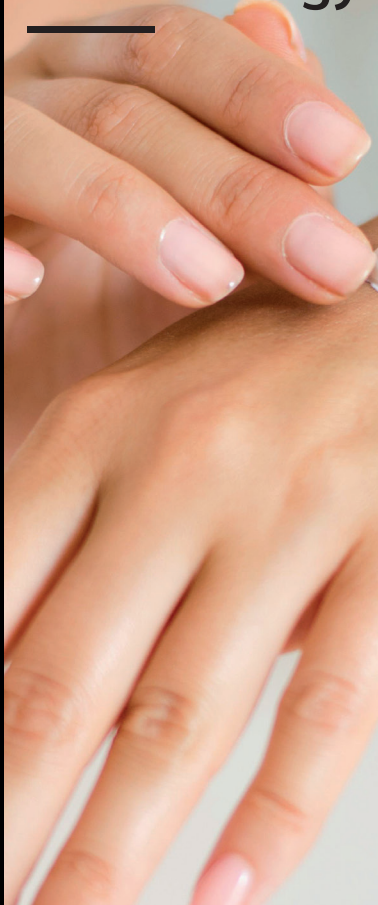
## Densi care



- ◉ Food supplement
- ◉ Based on Bioactive collagen peptides, organic silicon, calcium, vitamin D and minerals.
- ◉ 20 sachets.
- ◉ Indications:
  - Prevention of bone loss in women around the menopause.
  - Preventing age-related bone loss.
  - Individuals with low bone mineral density.
  - Strengthening the process of bone fracture healing.
- ◉ Exclusive formula with ingredients with its own clinical studies

a

## Dermatology



# ALODIA

Specially formulated cream  
for the relief of **allodynia**  
due to cold and contact.

With DHC, an exclusive peptide  
developed by the CSIC



### For use in:

- Patients with **allodynia**
  - Due to post-herpetic neuralgia
  - Due to diabetic polyneuropathy
  - Associated with migraines
  - Undergoing cancer treatment

## UPCOMING LAUNCHES:

---

### neutop

Attention-Deficit/Hyperactivity Disorder (ADHD)

- ◉ Exclusive formula that combines psychobiotics, neuronal antioxidants and vitamins and minerals.
- ◉ Ingredients supported by clinical studies in patients with ADHD

---

### neucare

Cognitive impairment

- ◉ Exclusive formula that combines psychobiotics, omega 3 and vitamins and minerals.
- ◉ Ingredients supported by clinical studies in patients with cognitive impairment.

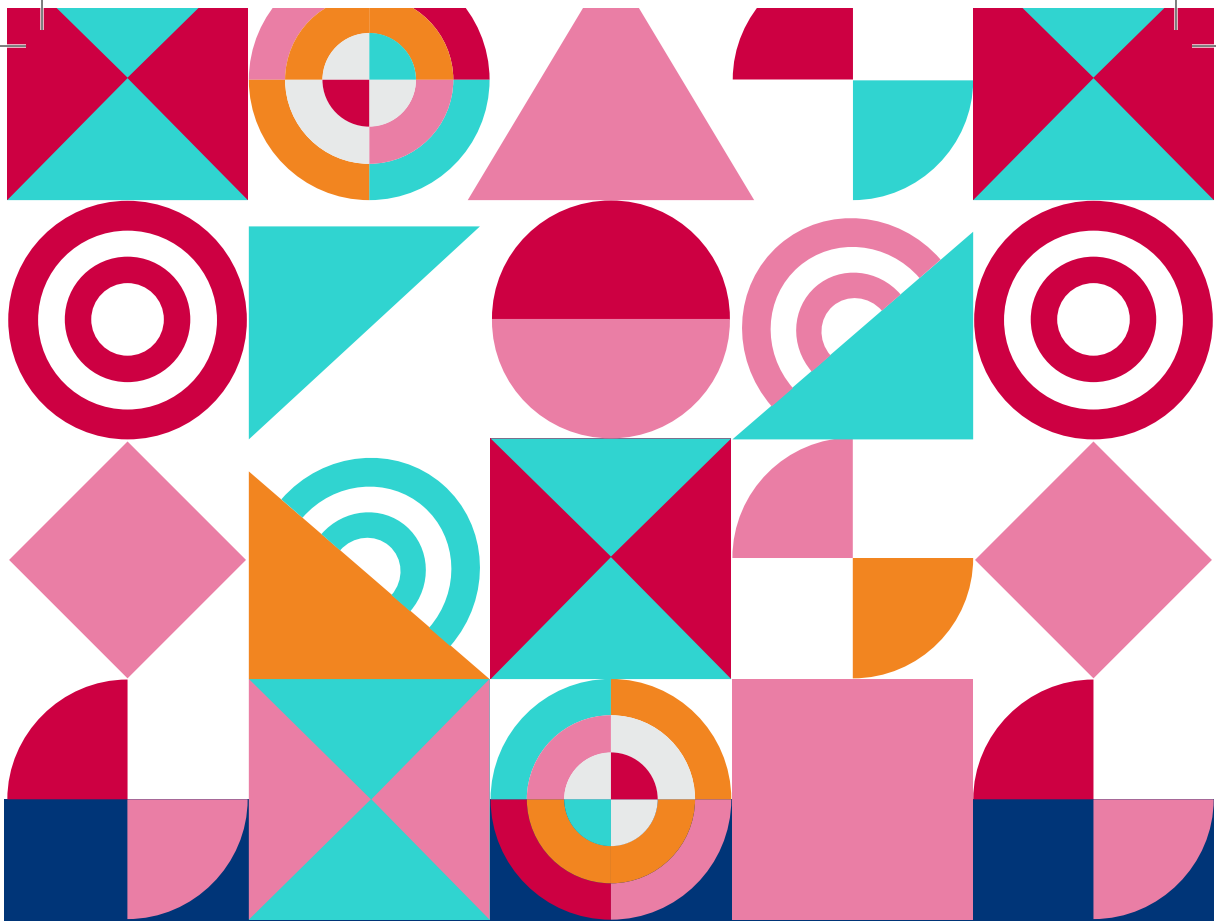


atika  
PHARMA



[www.atikapharma.com](http://www.atikapharma.com)





**actúa**



## actúa suero

- Oral rehydration solution with dissolved postbiotics, glucose and mineral salts (no reconstitution required).
- Food for Special Medical Purposes.
- Tetrabrik 200ml: Strawberry and orange.

#### • Indications:

- Diarrhoea of both infectious and non-infectious origin in children from 3 years old, adults and the elderly.



## actúa aftagum

- Food supplement.
- Based on Aloe Vera, Hyaluronic acid, vitamins and minerals.
- Bottle of 30 cherry gummies.

#### • Indications:

- Mouth ulcers.



## actúa sensibilidad

- Cosmetic.
- Daily mouthwash for the protection of the oral mucosa with hyaluronic acid, SH-oligopeptide-85 SP, glycerine, allantoin, vitamin E, centella asiatica and bisabolol.
- Bottle 250 ml.

#### • Indications: Daily to protect and prevent oral mucosal health problems caused by:

- Recurrences of canker sores
- Halitosis
- Dental treatments
- Medication
- Inadequate diets
- Smokers

without alcohol





## actúa fibra complex

- Food supplement.
- A balanced intake of soluble and insoluble fibres helps to improve the gastrointestinal health.
- Contains 2/3 soluble and 1/3 insoluble fibres.
- 5.1 gr of fibre per serving.
- 14 sticks, apple flavor.
- Recommended intake: 1-3 sticks per day.
- From 3 years old.



## actúa garganta

- Food supplement.
- Relieves itching and discomfort in the throat and pharynx improving symptoms such as cough.
- Based on honey, thyme, primrose and zinc.
- 24 lemon gummies.
- Recommended intake: 6 gummies per day.
- From 5 years old.

### UPCOMING LAUNCHES:

actúa  
kids suero

actúa  
kids fibra complex

actúa  
antiestrías



# ADVENTIA GROUP

[international@adventiapharma.com](mailto:international@adventiapharma.com)

[c.segura@adventiapharma.com](mailto:c.segura@adventiapharma.com)

 ADVENTIA  
PHARMA



[www.adventiapharma.com](http://www.adventiapharma.com)

SmartHEN®



[www.smarthen.com](http://www.smarthen.com)

 Bariatricline



[www.bariatricline.com](http://www.bariatricline.com)

atika  
PHARMA



[www.atikapharma.com](http://www.atikapharma.com)

actúa



[www.actuapharma.com](http://www.actuapharma.com)



Financiado por la Unión Europea  
NextGenerationEU